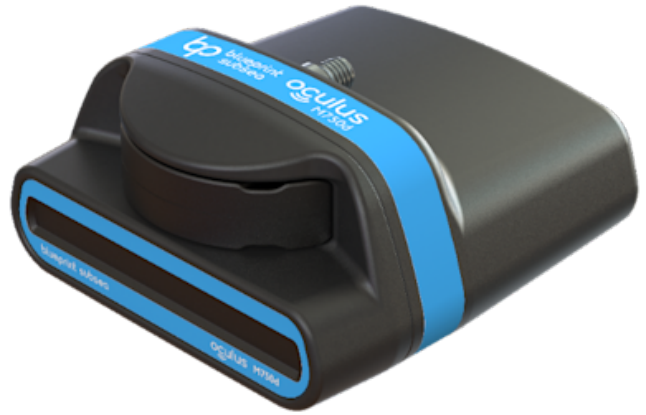


# OCULUS M370S SINGLE-FREQUENCY MULTIBEAM IMAGING SONAR

SKU: BPS-OCU-M370S

Single-frequency imaging multibeam sonar in a rugged form factor. Depth rating down to 500 meters.

**Supplier:** Blueprint Subsea



## TECHNICAL SPECIFICATIONS

### Mechanical

|                                |                                     |
|--------------------------------|-------------------------------------|
| <b>Dimensions</b>              | 122 mm (L) x 122 mm (W) x 62 mm (H) |
| <b>Construction</b>            | Anodised Aluminium                  |
| <b>Weight</b>                  | 980 g (Air), 360 g (Water)          |
| <b>Depth Rating</b>            | 500 m                               |
| <b>Temp. Range (operating)</b> | -5°C up to +35°C                    |
| <b>Temp. Range (Storage)</b>   | -20°C up to +50°C                   |

### Performance

|                              |         |
|------------------------------|---------|
| <b>Operating Frequency</b>   | 375 kHz |
| <b>Range (maximum)</b>       | 200 m   |
| <b>Range (minimum)</b>       | 0.2 m   |
| <b>Range Resolution</b>      | 8 mm    |
| <b>Update Rate (maximum)</b> | 40 Hz   |
| <b>Horizontal Aperture</b>   | 130°    |

|                                  |      |
|----------------------------------|------|
| <b>Vertical Aperture</b>         | 20°  |
| <b>Number of Beams (maximum)</b> | 256  |
| <b>Angular Resolution</b>        | 2°   |
| <b>Beam Separation</b>           | 0.5° |

### **Electrical**

|                          |   |
|--------------------------|---|
| <b>Connector</b>         | Impulse IE55 Series, 6-way  |
| <b>Communications</b>    | 4-wire 100-BaseT Ethernet 2-wire DSL extender module                |
| <b>Supply Voltage</b>    | 12 V to 32 V DC non-isolated  |
| <b>Power Consumption</b> | 10 W to 35 W (model and range dependent)                            |
| <b>Integrated Sensor</b> | Water pressure and temperature (for Velocity-of-Sound calculations) |